



HEATING

Propane/Oil



A Heater - Oil - Vented



B Shack Heater - Propane - Vented



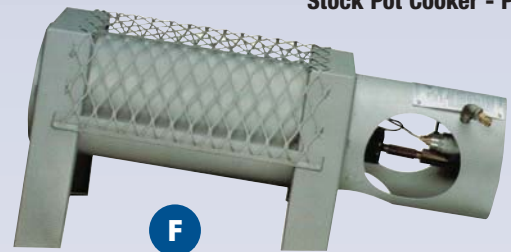
C Stock Pot Cooker - Propane



D Torch - Propane



E Heater - Propane - 100,000 BTU



F Heater - Propane - 150,000 BTU



G Heater with blower - Propane



H Heater with blower - Propane - 350,000 BTU

Code	Ref.	Description	Day	Week	Month
HE0504	A	Heater - Oil - Vented - 350,000 BTU			
HE1415	B	Shack heater - Propane - Vented - 15,000 BTU			
HE1420	B	Shack heater - Propane - Vented - 20,000 BTU			
HE1435	B	Shack heater - Propane - Vented - 35,000 BTU			
HE1446	B	Shack heater - Propane - Vented - 46,000 BTU			
HE1450	B	Shack heater - Propane - Vented - 50,000 BTU			
HE1502	C	Stock pot cooker - Propane			
HE1505	D	Torch - Propane			
HE1514	E	Heater - Propane - 100,000 BTU			
HE1515	E	Heater - Propane - 130,000 BTU			
HE1516	F	Heater - Propane - 150,000 BTU			
HE1518	G	Heater with blower - Propane - 200,000 BTU			
HE1520	E	Heater - Propane - 200,000 BTU			
HE1535	H	Heater with blower - Propane - 350,000 BTU			
HE1540	G	Heater with blower - Propane - 400,000 BTU			

HEATING



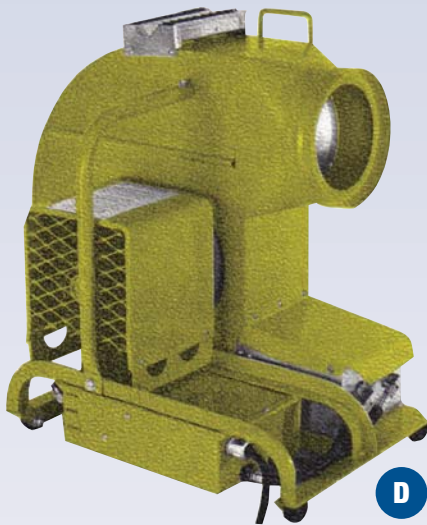
A Heater - Propane
Natural Gas



B Heater - Propane
Infra-red



C Heater - Propane
Infra-red



D Heater with blower
Propane - 62,000 BTU

NEW



E Heater - Natural gas / Propane

Code	Ref.	Description	Day	Week	Month
HE1570	A	Heater - Propane - 700,000 BTU			
HE1597	A	Heater - Propane - 1,000,000 BTU			
HE1630	B	Heater - Propane - 15,000 BTU - Infra-red			
HE1640	B	Heater - Propane - 25,000 BTU - Infra-red			
HE1650	C	Heater - Propane - 30,000 BTU - Infra-red			
HE1670	C	Heater - Propane - 50,000 BTU - Infra-red			
HE1720	D	Heater with blower - Propane - 62,000 BTU			
HE1830	E	Heater - Natural gas /propane - 170,000 BTU			
HE1850	E	Heater - Natural gas /propane - 350,000 BTU			
HE2001	A	Heater - Natural gas - 400,000 BTU			
HE2050	A	Heater - Natural gas - 1,000,000 BTU			
HE2070	A	Heater - Natural gas - 1,100,000 BTU			
HE2080	A	Heater - Natural gas - 1,500,000 BTU			
HE3001	F	Heater - Steam			

HE3020* N/I Heater - Steam - Explosion-proof
*Not illustrated



F Heater - Steam

MTL 514-333-1212 LONGUEUIL 450-923-2212 TOR. 416-747-1212 OTT. 613-744-1212

HEATING

Electric



A

Heater - Electric - 1500W



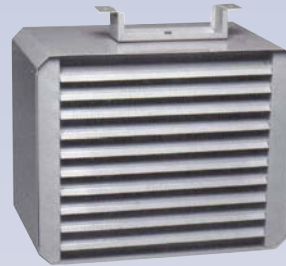
B

Baseboard



D

Heater - Electric - 9000W



E

Heater - Electric - 5KW



C

Heater - Electric - 4800W



F

Heater - Electric - 50KW

Code	Ref.	Description	Day	Week	Month
HE2501	A	Heater - Electric - 1500W			
HE2502	B	Baseboard			
HE2504	C	Heater - Electric - 4800W - 220V			
HE2506	D	Heater - Electric - 9000W - 220V			
HE2507	E	Heater - Electric - 5KW - 600V - 17,000 BTU			
HE2516	E	Heater - Electric - 15KW - 600V - 51,000 BTU			
HE2521	E	Heater - Electric - 20KW - 600V - 68,000 BTU			
HE2536	E	Heater - Electric - 30KW - 600V - 102,000 BTU			
HE2541	E	Heater - Electric - 40KW - 600V - 136,000 BTU			
HE2551	F	Heater - Electric - 50KW - 600V - 170,000 BTU			

Accessories



H

"T"-block



I

Propane Cylinder



G

Ducts



J

Hose - 3/8" x 10'

Code	Ref.	Description	Day	Week	Month
HE9011	G	Ducts			
HE9021	H	"T"-block			
HE9031*	N/I	Thermostat			
HE9041	I	Propane cylinder - 16.2L - 20 lbs			
HE9051*	N/I	Propane cylinder - 89.1L - 100 lbs			
HE9060	J	Hose - 3/8" x 10'			

*Not illustrated

MTL 514-333-1212

LONGUEUIL 450-923-2212

TOR. 416-747-1212

OTT. 613-744-1212



www.dickiemoore.com

71